

# 5790 • 5791 • 5792 • 5793



**Shelby**  
Industries

## A-Frame Jack Installation Operation & Maintenance Instructions

Shelby Industries  
P.O. Box 308  
Industrial Park  
Shelbyville, Ky. 40066

### MOUNTING INSTRUCTIONS

– CAUTION –

THESE JACKS ARE INTENDED FOR MOUNTING TO A-FRAME COUPLERS ONLY. THE USE OF THESE JACKS OTHER THAN LISTED ON THIS SHEET MUST BE APPROVED BY SHELBY INDUSTRIES.

1. PLACE JACK IN A-FRAME COUPLER MOUNTING HOLE IN SUCH A MANNER THAT THE HOLES ARE IN LINE.
2. INSERT MOUNTING BOLTS: THREE BOLTS THROUGH THE JACK MOUNTING PLATE AND FASTENED SECURELY TO THE COUPLER. (USE 3/8-16 BOLTS GRADE 5 TORQUE 15-20 FT. LBS. ON TAPPED COUPLERS, 3/8-16 NUTS AND LOCK-WASHERS MUST BE USED ON NON-TAPPED COUPLERS.)
3. IF THE TRAILER TONGUE LOAD EXCEEDS 250 LBS., SHELBY RECOMMENDS USING A BOTTOM SUPPORT PLATE.

### JACK OPERATION

**WARNING:** Never exceed the rated capacity stamped on the jack. When raising and lowering the jack, operator should keep body and feet clear of trailer tongue. The jack should always be fully retracted before towing trailer. Use of blocks for additional ground clearance may create an unsafe

condition and cause injury.

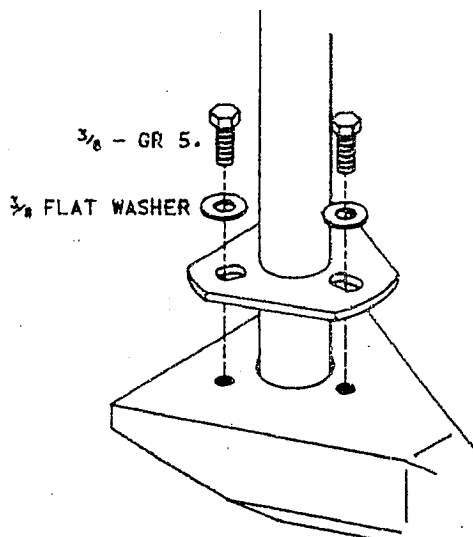
To operate:

1. Turn handle clockwise to raise and counter-clockwise to lower.

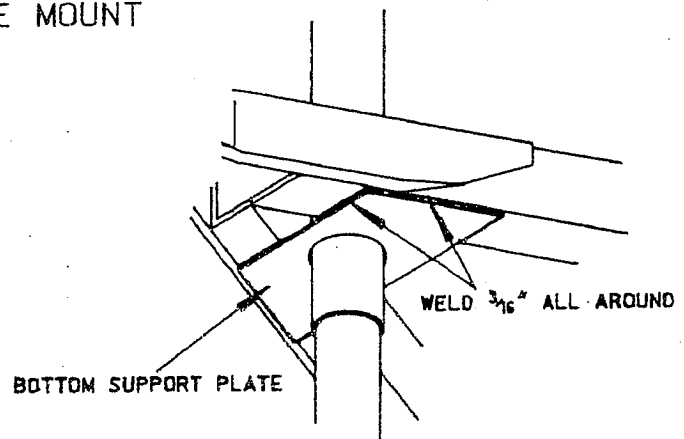
Fully retract jacks before towing.

### JACK MAINTENANCE

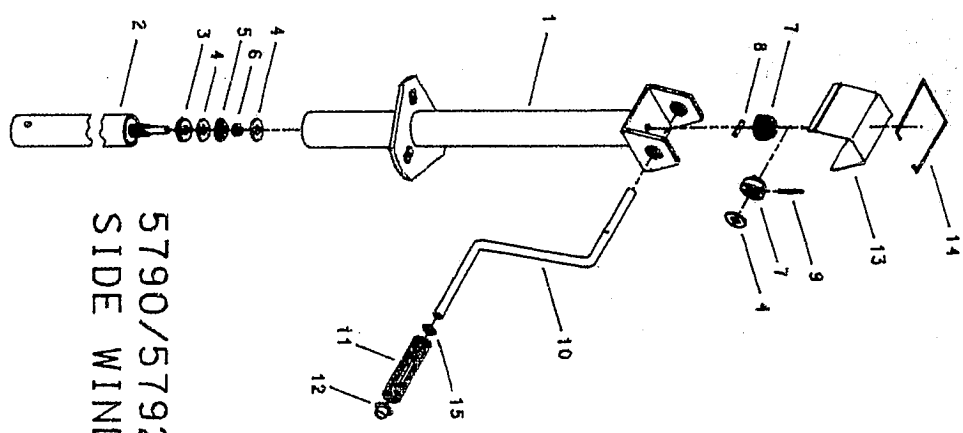
1. Jack should be lubricated in the following manner at least every six months. Extend jack as far as possible and lubricate entire length of outside of inner tube with SAE 30 heavy oil. Clean dirt from jack every six months.
2. On side crank models only, remove clip spring and top cover and lubricate gears with wheel bearing grease.
3. When jack is lowered, always provide footing such as caster wheel or a jack foot beneath jack to prevent dirt, etc., from getting into center of ram.
4. Should jack become difficult to operate, remove – clean and oil, inspect for bent or worn parts. Use only factory supplied parts for replacement.
5. If it is not possible to get jack to operate freely, replace jack.



A-FRAME MOUNT



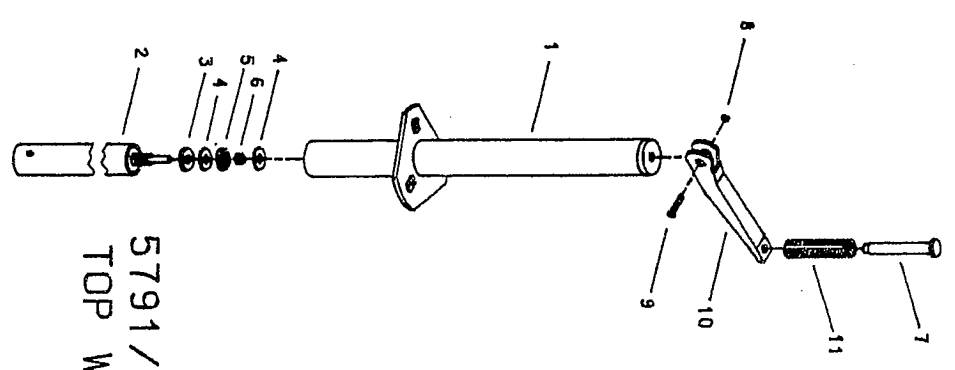
MC. 5790: 1200 LB. CAP.  
 MODEL 5792: 2000 LB. CAP.



5790/5792  
 SIDE WIND

ITEM	DESCRIPTION	PART NO.	QUANTITY
1	UPPER TUBE 5790	2928-04/04Z	1
1	UPPER TUBE 5792	2944-04/04Z	1
2	LOWER TUBE	2992-11	1
3	WASHER	2118-00	1
4	THRUST WASHER	2119-09	2
5	BEARING	2120-09	1
6	SPACER	2121-09	1
7	GEAR	2125-09	2
8	GEAR PIN	2126-03	1
9	GROOVE PIN	2127-09	1
10	HANDLE	2128-03	1
11	HANDLE GRIP	0919-00	1
12	END CAP	2130-09	1
13	COVER - 1,200 LB.	2123-18	1
13	COVER - 2,000 LB.	2123-19	1
14	COVER CLIP	2124-03	1
15	RETAINER	2106-09	1

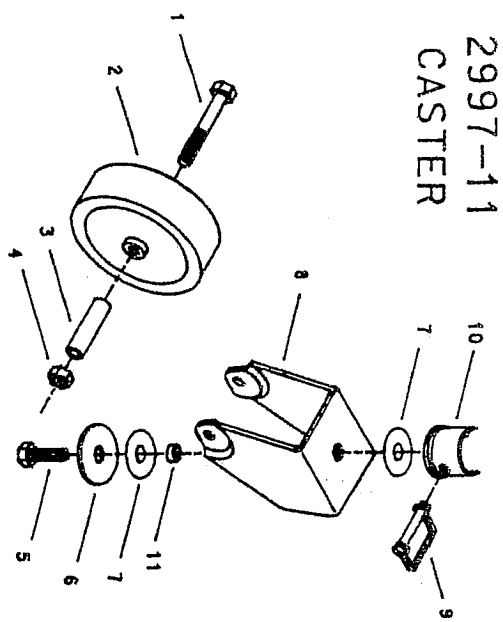
MODEL 5791: 00 LB. CAP.  
 MODEL 5793: 2000 LB. CAP.



5791/5793  
 TOP WIND

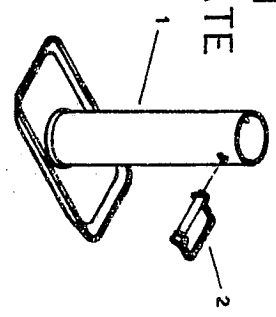
ITEM	DESCRIPTION	PART NO.	QUANTITY
1	UPPER TUBE 5791	2927-07/07Z	1
1	UPPER TUBE 5793	2946-07/07Z	1
2	LOWER TUBE	2943-11	1
3	WASHER	2118-00	1
4	THRUST WASHER	2119-09	2
5	BEARING	2120-09	1
6	SPACER	2121-09	1
7	HANDLE PIN	2203-03	1
8	1/4" -20 HEX NUT	0672-03	1
9	1/4"-20X 1 CAP SCREW	2202-03	1
10	HANDLE	2197-03	1
11	HANDLE GRIP	0919-00	1

2997-11  
 CASTER



ITEM	DESCRIPTION	PART NO.	QUANTITY
1	1/2 X 3-1/4 BOLT	2105-03	1
2	WHEEL	2103-09	1
3	SPANNER	2104-03	1
4	1/2 LOCKNUT	0129-03	1
5	BOLT	2175-03	1
6	WASHER	2159-03	1
7	NYLON WASHER	2162-09	1
8	CASTER	2101-03	2
9	CLEVIS PIN	2110-03	1
10	WELDED TUBE ASM	2941-07	1
11	CASTER SPACER	2174-09	1

2998-11  
 FOOTPLATE



ITEM	DESCRIPTION	PART NO.	QUANTITY
1	FOOTPLATE ASM	2948-03	1
2	CLEVIS PIN	2110-03	1

2200-00  
 BOTTOM  
 SUPPORT  
 PLATE

