

## CONGRATULATIONS!

You now possess an American made swivel jack that is one of a kind. Shelby's OSD HD Galvanized Swivel Jack will withstand the harshest conditions you may face as you trailer any load. The protective coating on this jack acts as a suit of armor. Like no other finish, the hot dip galvanized coating will protect this jack, both inside and out, from our greatest enemy- rust! For added protection, all fasteners are marine grade stainless steel and the inner screw is a-coated for long life. Shelby's OSD swivel design is patented, and this superior mount received an innovation-of-the-year award in the marine industry. We guarantee a positive return for you on this investment. If for any reason you are not satisfied with this product, kindly contact us and we will proactively address your concern. Our telephone is (502) 633-2040 ext. 406, and our web address is [www.shelbyindustries.com](http://www.shelbyindustries.com).

Thank you,

*Fivek Sarin*  
President & CEO

## Jack Installation Operation & Maintenance Instructions

**Models:**  
5874A8-81HG

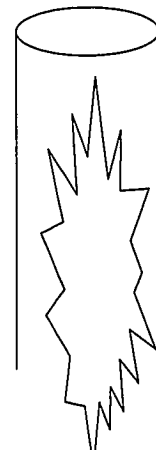
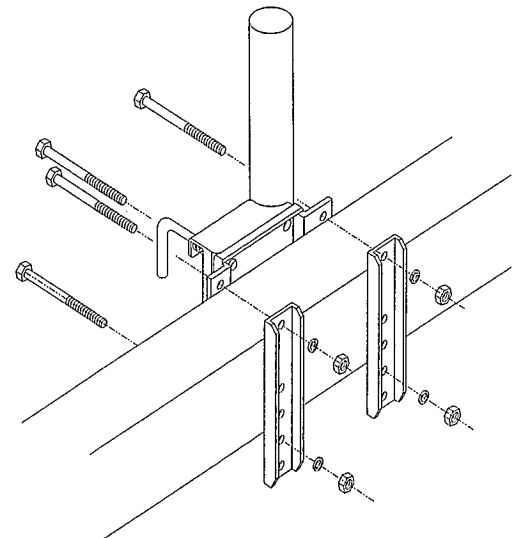
### BOLT-ON MOUNTING INSTRUCTIONS

**-CAUTION-**  
SHELBY JACKS ARE INTENDED FOR MOUNTING TO SQUARE TONGUE TRAILERS ONLY. THEY ARE NOT RECOMMENDED FOR ROUND TONGUE TRAILERS.

1. Place jack against trailer tongue and position the mounting against straps in such a manner that the top holes are in line.
2. Insert mounting bolts: Two bolts on top of the trailer tongue and two bolts below. Make sure the top mounting bolts rest directly on top of the trailer tongue and the bottom bolts are as close to the trailer tongue as possible.
3. Tighten lockwashers and nuts to mounting bolts. Nuts to be torqued to 15-20 ft-lbs.

### Decal Placement

1. Decal is to be placed on outside of tube length ways on jack. Use the points on decal to center along tube.



# JACK OPERATION

**WARNING:** Never exceed the rated capacity of the jack. When raising and lowering the jack, the operator should keep body and feet clear of the trailer tongue. The jack should always be fully retracted before towing the trailer. Use of blocks for additional ground clearance may create an unsafe condition and cause injury.

## TO OPERATE:

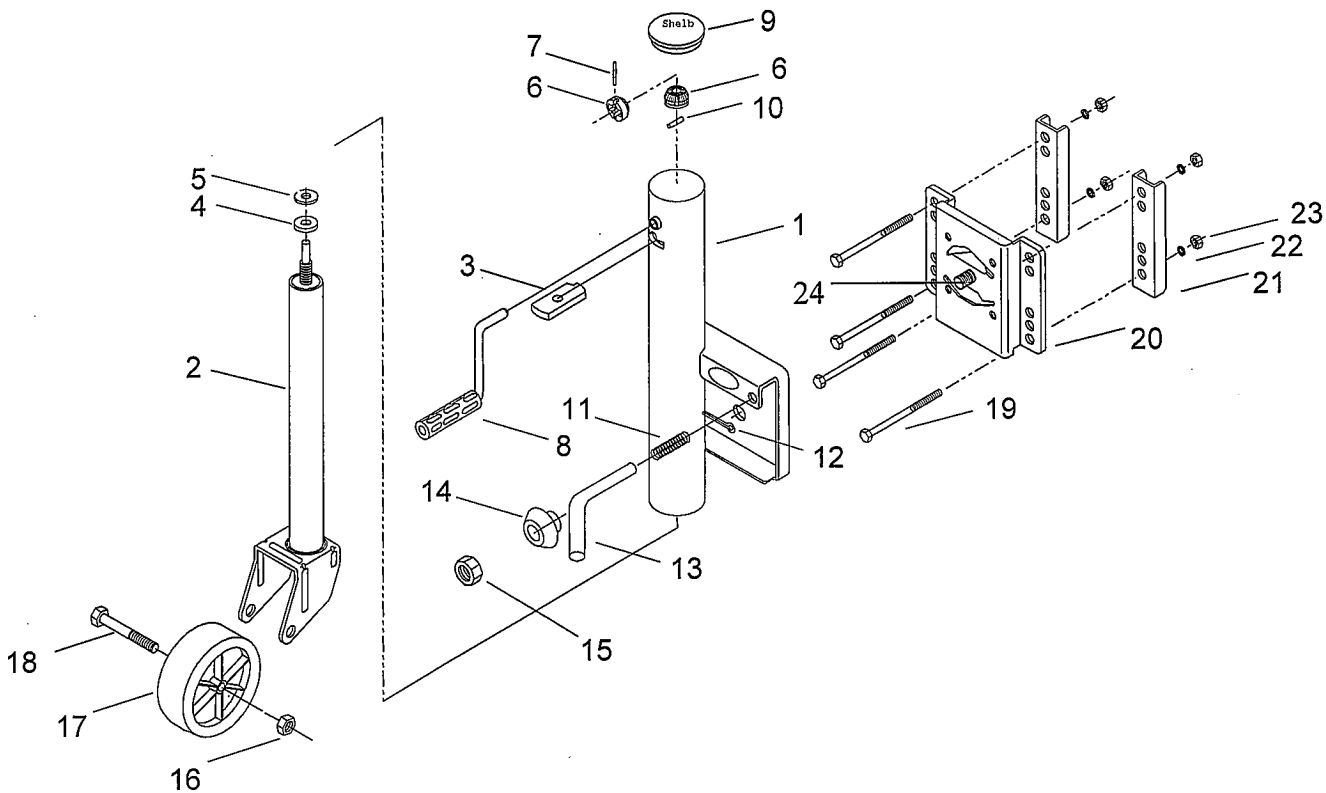
Turn handle clockwise to raise and counter-clockwise to lower.

## FULLY RETRACT JACKS BEFORE TOWING.

The lock pin should be properly seated before operating the jack or leveling in traveling position. Be sure dirt, sand, ice, etc., does not obstruct the proper setting of the pull pin. The jack must be in the horizontal position before towing.

## JACK MAINTENANCE:

The jack should be lubricated in the following manner at least every six months. Extend jack as far as possible and lubricate entire length of outside of inner tube with SAE 30 heavy oil. Clean dirt from jack every six months. Remove plastic cap and lubricate gears with wheel bearing grease.



## Capacity

ITEM	DESCRIPTION	PART#	QTY
1	UPPER TUBE ASM	0001-00HG	1
2	LOWER TUBE ASM	0127-11	1
3	SUPPORT PLATE	0128-07AC	1
4	FLAT WASHER	0037-09	1
5	BEARING	2369-09	1
6	JACK GEAR	2216-09	2
7	GROOVE PIN	0073-09	1
8	HANDLE ASM	0130-11	1
9	PLASTIC CAP	0042-09	1
10	GROOVE PIN	0073-09	1
11	SPRING	0136-09	1
12	RETAINING RING	0155-09	1

## Capacity

ITEM	DESCRIPTION	1500LB	QTY
13	PULL PIN	0135-09	1
14	SPACER BUSHING	0009-09	1
15	FLANGE LOCK-NUT	0132-09	1
16	1/2" LOCK-NUT	0157-09	1
17	WHEEL	0047-09	1
18	BOLT 1/2"X3"	0156-09	1
19	BOLT 3/8"X4"	0160-09	4
20	MOUNTING PLATE	0131-0HG	1
21	MOUNTING BAR	2138-07HG	2
22	LOCKWASHER 3/8"	0162-09	4
23	NUT 3/8"	0161-09	4
24	1/2"-13 X 1.25 GR 5 BOLT	0133-09	1

Shelby Industries, P.O. Box 308, 175 McDaniel Road, Shelbyville, Ky. 40066