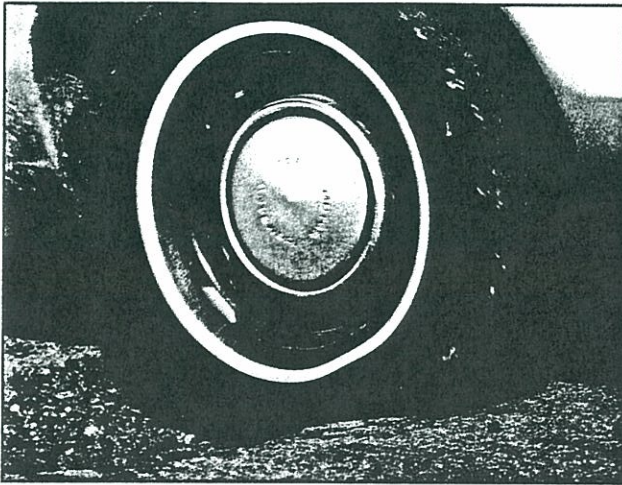


### IMPACT DAMAGE

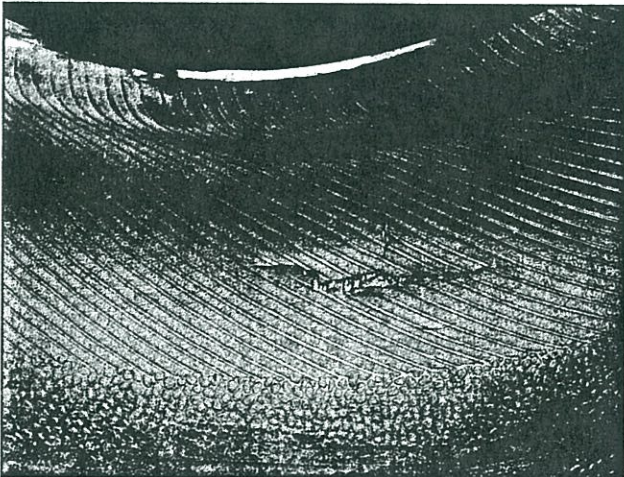
Impact damage to the tire body may show little or no exterior evidence. But internal damage may cause sudden air loss ("blow out") or a flat sometime after the time of impact. Even a new tire may be damaged by impact. In tubeless tires, impact damage may cause a slow leak and result in tire failure. Check any air loss immediately to determine its cause.



Impact Damage

### RIM BRUISE BREAK

This kind of cord damage may occur if a tire strikes a rigid object (like a curb) hard enough to squash the tire's sidewall between the rim flange and the rigid object.



Rim Bruise Break

### DEMOUNTING OR MOUNTING DAMAGE

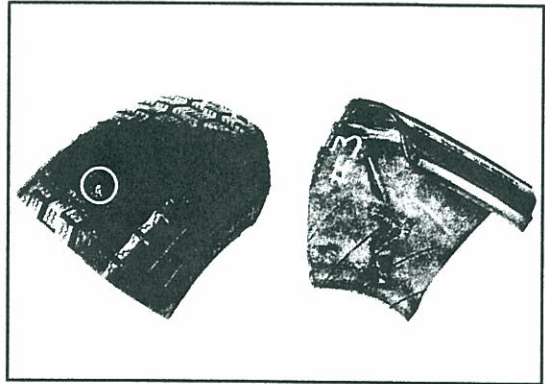
Tires, which have been damaged by improper mounting procedures, may fail prematurely.

### OFF-THE-ROAD DAMAGE

Vehicles operated in areas away from paved roads can encounter many objects that can cause tire damage. Careful inspection of the tires should be made after use in off-the-road service. Any tire damage should be repaired within approved guidelines or replaced. Loss of air pressure should be checked and the cause remedied.

## **WARNING**

If a tire continues to lose air, or has lost all or most of its air pressure, it must be removed from the wheel for complete internal inspection to be sure it is not damaged. Driving even a short distance on a damaged tire could result in tire failure, possibly resulting in serious injury or death.



This dangerous, non-repairable condition was caused by driving the tire a short distance while severely underinflated. Damage was not visible from the outside.

### OZONE CRACKING OR WEATHER CHECKING

Treating tires with dressings or incompatible cleaning agents can cause ozone cracking or weather checking. Check with the tire manufacturer before using these products.