

Jack Installation Operation & Maintenance Instructions

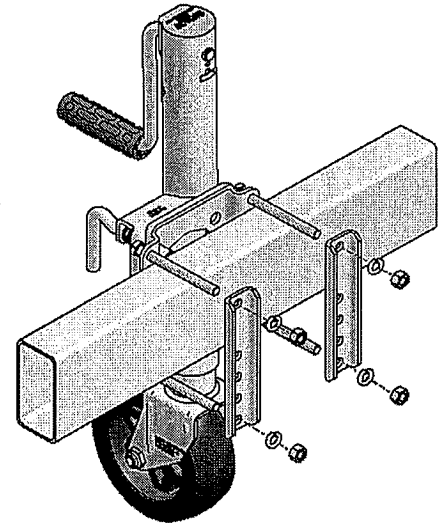


Models:

5854A	5854A8	5858A	5876
5856A	5856A8	5874	5874A8
5876A8	5855		

-CAUTION-

SHELBY JACKS ARE INTENDED FOR MOUNTING OR WELDING TO SQUARE TONGUE TRAILERS ONLY. THEY ARE NOT RECOMMENDED FOR ROUND TONGUE TRAILERS.

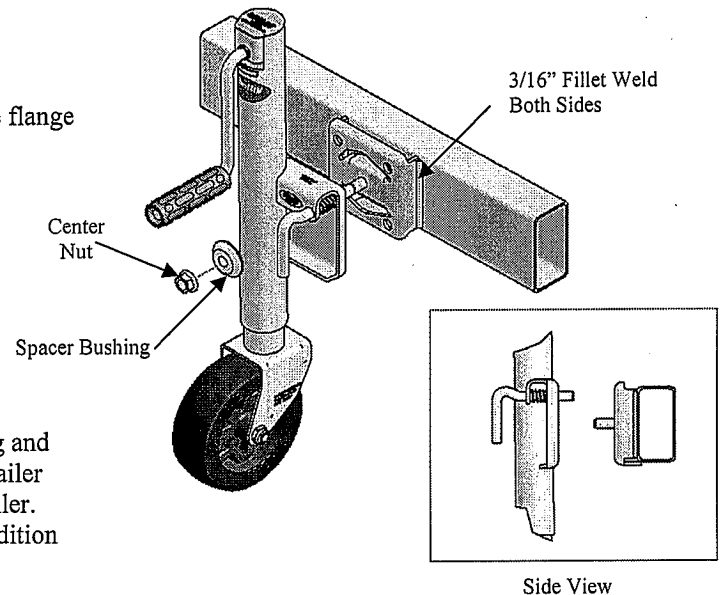


BOLT-ON MOUNTING INSTRUCTIONS

1. Place jack against trailer tongue and position the mounting against straps in such a manner that the top holes are in line.
2. Insert mounting bolts: Two bolts on top of the trailer tongue and two bolts below. Make sure the top mounting bolts rest directly on top of the trailer tongue and the bottom bolts are as close to the trailer tongue as possible.
3. Tighten lockwashers and nuts to mounting bolts. Nuts to be torqued to 15-20 ft-lbs.

WELD-ON MOUNTING INSTRUCTIONS

1. Place the weld-on mounting plate against the trailer tongue with the flange locating against the bottom (see side view). Weld both sides of the mounting bracket using 3/16" fillet welds.
2. Assemble jack to welded bracket using first the spacer bushing and then the 1/2" locking flange nut. Torque the center flange nut to approximately 40 ft-lbs.



JACK OPERATION

WARNING: Never exceed the rated capacity of the jack. When raising and lowering the jack, the operator should keep body and feet clear of the trailer tongue. The jack should always be fully retracted before towing the trailer. Use of blocks for additional ground clearance may create an unsafe condition and cause injury.

TO OPERATE:

Turn handle clockwise to raise and counter-clockwise to lower.

FULLY RETRACT JACKS BEFORE TOWING.

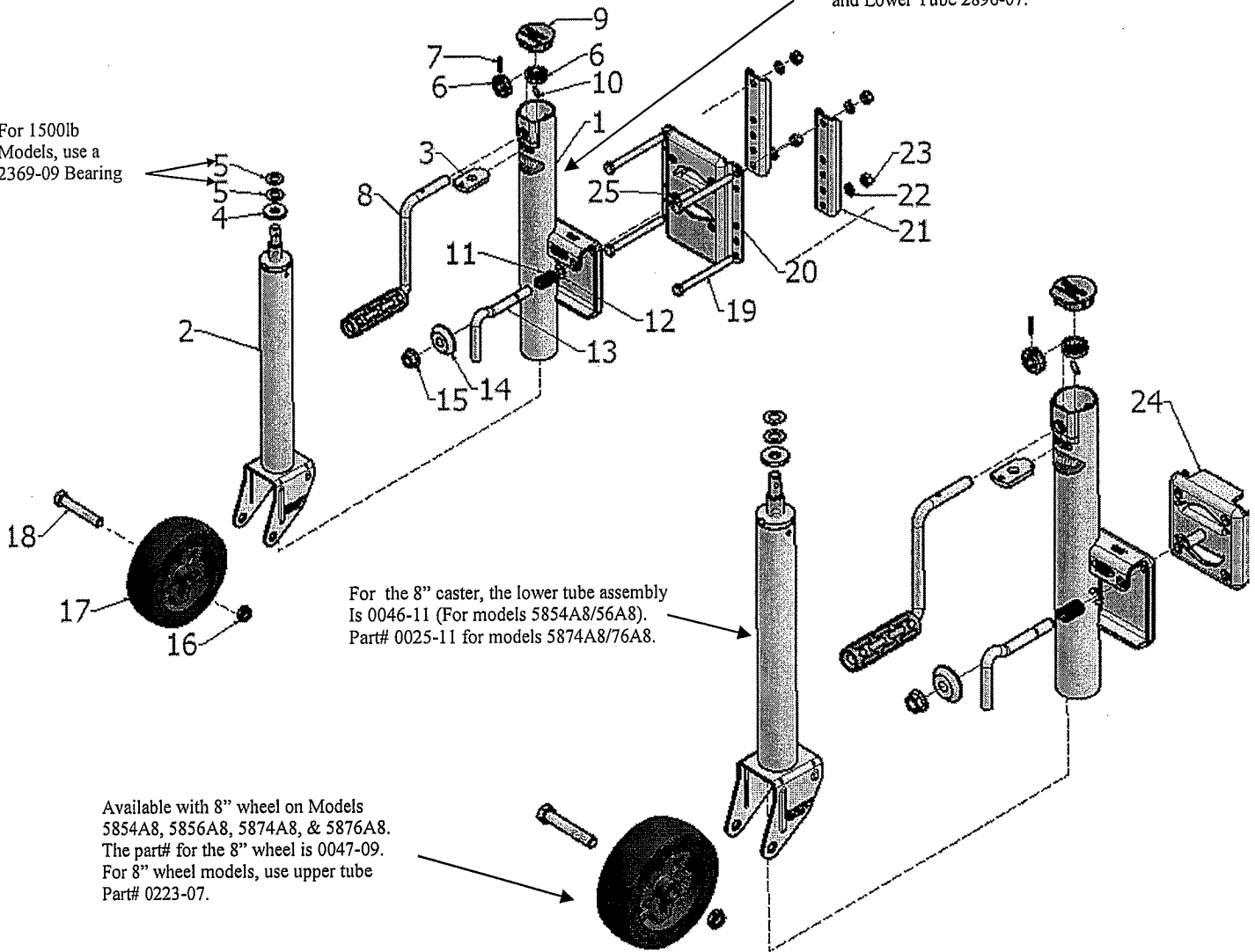
The lock pin should be properly seated before operating the jack or leveling in traveling position. Be sure dirt, sand, ice, etc., does not obstruct the proper setting of the pull pin. The jack must be in the horizontal position before towing.

JACK MAINTENANCE:

The jack should be lubricated in the following manner at least every six months. Extend jack as far as possible and lubricate entire length of outside of inner tube with SAE 30 heavy oil. Clean dirt from jack every six months. Remove plastic cap and lubricate gears with wheel bearing grease.

For Model #5858A
Use upper Tube #0071-07Z,
and Lower Tube 2896-07.

For 1500lb
Models, use a
2369-09 Bearing



Capacity

ITEM	DESCRIPTION	1000LB	1500LB	QTY
1	UPPER TUBE ASM	2000-07	0001-07	1
2	LOWER TUBE ASM	2873-11	0076-11	1
3	SUPPORT PLATE	2218-03	0041-03	1
4	FLAT WASHER	2118-03	0137-00	1
5	NYLON WASHER	2220-09	2369-09	*
6	JACK GEAR	2216-09	2216-09	2
7	GROOVE PIN	0073-09	0073-09	1
8	HANDLE ASM	2874-11	2874-11	1
9	PLASTIC CAP	2217-09	0042-09	1
10	STEEL DOWEL PIN	0438-09	0438-09	1
11	SPRING	2135-03	2135-03	1
12	RETAINING SNAP RING	0111-03	0111-03	1

Capacity

ITEM	DESCRIPTION	1000LB	1500LB	QTY
13	PULL PIN	2248-03	2248-03	1
14	SPACER BUSHING	0009-09	0009-09	1
15	FLANGE LOCK-NUT	0007-09	0007-09	1
16	1/2" NYLON LOCK-NUT	0129-03	0129-03	1
17	6" WHEEL	2224-09	2224-09	1
18	BOLT 1/2" X 3"	2237-03	2237-03	1
19	BOLT 3/8" X 4"	2525-03	2139-03	4
20	MOUNTING PLATE	0006-03	0006-03	1
21	MOUNTING BAR	2138-03	2138-03	2
22	LOCKWASHER 3/8"	2141-03	2141-03	4
23	NUT 3/8"	2526-03	2140-03	4
24	WELD-ON BRACKET	0014-00	0014-00	1
25	1/2"-13 X 1.25 GR 5 BOLT	0008-09	0008-09	1

* 1000lb Capacity QTY=2, For the 1500lb Capacity Part Changes to a Bearing QTY=1

Shelby Industries, P.O. Box 308, 175 McDaniel Road, Shelbyville, Ky. 40066
Website: www.shelbyindustries.com